

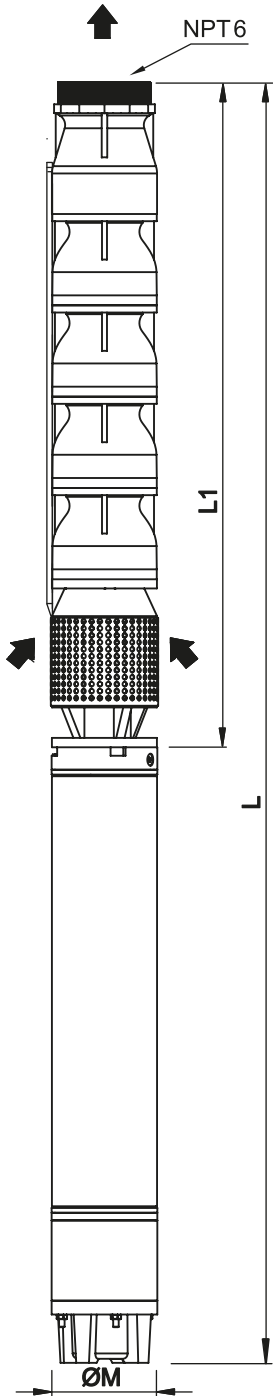
USP 5F, USP 6, USP 7, USP 8, USP 10 SERIES

No.	Pompa Parçası Pump Components	Standart Malzeme Standard Material	İsteğe Bağlı Malzeme Optional Material
1	Gövde/Difüzör Bowl / Diffuser	Kır Döküm - GG 25 Grey Iron - GG 25	Paslanmaz AISI 304-316 Bronz G - Cu - Sn 10 SS. Cast AISI 304-316 Bronze G - Cu - Sn 10
2	Fan Impeller		
3	Çıkış Gövdesi Delivery Case		
4	Emiş Gövdesi Suction case		
5	Klape Valve	Delrin	
6	Yataklama Burcu Bearing Bush	Kauçuk + Bronz Nitrile Rubber + Bronze	-----
7	Mil Kaması Shaft Sleeve	Paslanmaz AISI 420 Cr Steel AISI 420	
8	Mil Shaft	Paslanmaz AISI 420 Cr Steel AISI 420	Paslanmaz AISI 304-316 Cr-Ni Steel AISI 304-316
9	Kaplin Couple	Paslanmaz AISI 420 Cr Steel AISI 420	
10	Filtre Strainer	Paslanmaz AISI 304 Cr-Ni Steel AISI 304	Paslanmaz AISI 316 Cr-Ni Steel AISI 316
11	Fan Koniği Bushing	Paslanmaz AISI 410 Cr. Steel AISI 410	
12	Civatalar Bolts	Din 933	

Teknik Bilgi / Technical Data

Karışık Akışlı 10" Döküm Gövdeli Dalgıç Pompa
Mixed Flow 10" Cast Iron Submersible Pump

Fan Tipi Impeller Type	Karışık Mixed	Maks.Randımanda H (tek kd.) Max.Flow Rate In H (single stage)	24.8 m	Çalışma Ortamı Operating Environment	Temiz Su Clear Water ph 6,5-8,0
Maks.Randıman Max.Efficiency	61,0%	Maks.Randımanda Güç(P2)(tek kd.) Max.Flow Rate In Power(P2)(single stage)	39,91 kW	Maks. Çalışma Sıcaklığı Max. Temperature	30 °C
Maks.Randımanda Debi Max.Flow Rate In Efficiency	100 l/s	Maks. Güç(P2)(tek kd.) Max. Power(P2)(single stage)	40,2 kW	Maks. Katı Madde Max. Solid Material	50 gr/m ³



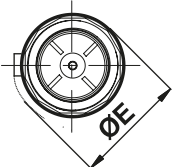
Performans Tablosu / Performance Chart

Pompa Tipi Pump Type	Motor Tipi Type	HP	kW	Nominal Akım Current 380V	Q	n = 2900 d/d rpm							
						I/sec	0	50.0	70.0	80.0	90.0	100.0	120.0
						m ³ /h	0	180.0	252.0	288.0	324.0	360.0	432.0
USP 10G/1A	USM 7050 USM 8050	50.0	37.0	76.1 76.0	H m	40	31.5	28	25.6	23.8	21.4	16.6	
USP 10G/1	USM 7060 USM 8060	60.0	45.0	92.6 90.0		46	36	32	30	27	24.6	18.6	
USP 10G/2A	USM 8090	90.0	66.0	134.0		85	69	61	55	50	45	31	
USP 10G/2	USM 8110 USM 10110	110.0	81.0	160.0 162.8		94	75	66	59	54	48	34	
USP 10G/3A	USM 10150	150.0	110.0	216.1		127	103	91	84	76	68	48	
USP 10G/3	USM 10175	175.0	129.0	250.6		136	110	97	89	81	72	52	
USP 10G/4A	USM 10200	200.0	147.0	285.6		169	136	119	114	101	90	65	
USP 10G/4	USM 10225	225.0	165.0	318.8		180	147	130	120	110	99	71	
USP 10G/5A	USM 10250	250.0	185.0	355.3		210	170	151	140	128	115	82	
USP 10G/5	-----	300.0	220.0	-----		225	183	161	151	137	125	89	
USP 10G/6	-----	335.0	246.0	-----		272	222	196	182	164	149	105	

Ölçüler & Ağırlıklar

Dimensions & Weights

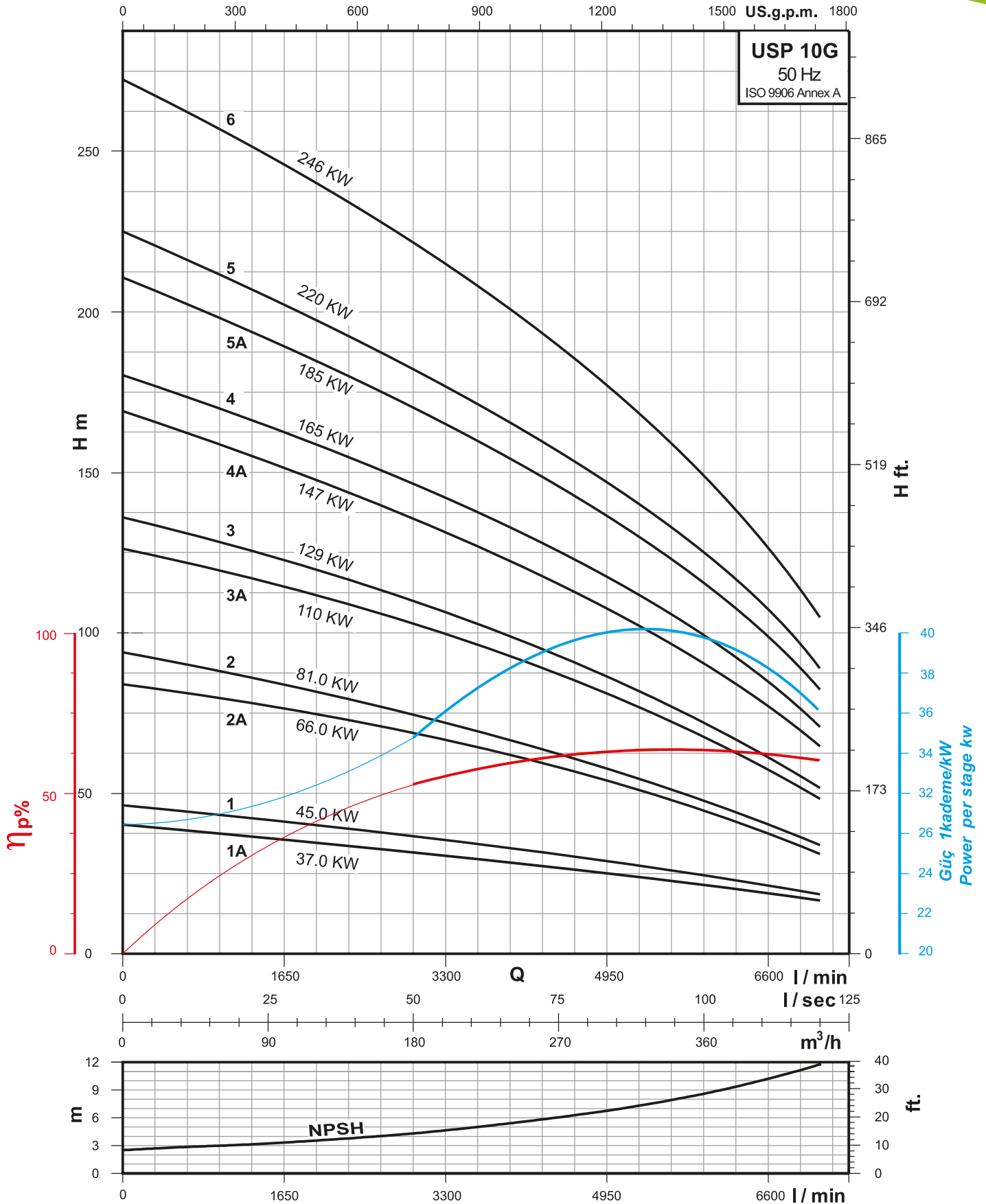
Pompa + Motor Pump + Motor	ØM (mm)	ØE (mm)	Boy Length (mm)		Ağırlık Net Weight (kg)	
			L1	L	Pump	Pump+ Motor
USP 10G/1A + USM 7050	170	248	755	1780	79.0	197.0
USP 10G/1A + USM 8050	190	248	755	1815	79.0	232.0
USP 10G/1 + USM 7060	170	248	755	1860	79.0	209.0
USP 10G/1 + USM 8060	190	248	755	1905	79.0	239.0
USP 10G/2A + USM 8090	190	248	945	2265	104.0	293.0
USP 10G/2 + USM 8110	190	248	945	2365	104.0	321.0
USP 10G/2 + USM 10110	231	248	945	2295	104.0	364.0
USP 10G/3A + USM 10150	231	248	1135	2625	129.0	441.0
USP 10G/3 + USM 10175	231	248	1135	2720	129.0	472.0
USP 10G/4A + USM 10200	231	248	1325	3040	154.0	539.0
USP 10G/4 + USM 10225	231	248	1325	3115	154.0	579.0
USP 10G/5A + USM 10250	231	248	1515	3465	179.0	644.0
USP 10G/5	-----	248	1515	-----	179.0	-----
USP 10G/6	-----	248	1705	-----	204.0	-----



Performans Eğrisi / Performance Curves

Karışık Akışlı 10" Döküm Gövdeli Dalgiç Pompa

Mixed Flow 10" Cast Iron Submersible Pump



Performans eğrileri 15 °C sıcaklıkta, 1 atm. basınç altında, fiziksel değerleri kinematik viskozite $\nu = 1 \text{ mm}^2/\text{s}$ ve yoğunluk $\rho = 1000 \text{ kg}/\text{m}^3$ olan temiz su baz alınarak hazırlanmıştır.
Performance curves are based on temp. 15 °C , with pressure 1 atm. , physical values kinematic viscosity $\nu = 1 \text{ mm}^2/\text{sec}$ and density $\rho = 1000 \text{ kg}/\text{m}^3$.
Firmamız , ürünler üzerinde haber vermeksizin değişiklik yapma hakkına sahiptir. We reserve the right to make the changes on products without notice.