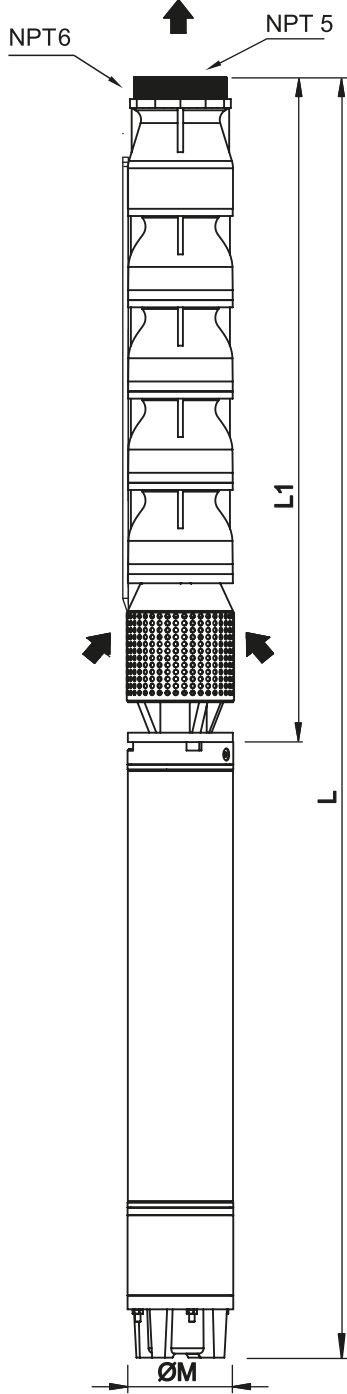


USP 5F, USP 6, USP 7, USP 8, USP 10 SERIES

No.	Pompa Parçası Pump Components	Standart Malzeme Standard Material	İsteğe Bağlı Malzeme Optional Material
1	Gövde/Difüzör Bowl / Diffuser	Kır Döküm - GG 25 Grey Iron - GG 25	Paslanmaz AISI 304-316 Bronz G - Cu - Sn 10 SS. Cast AISI 304-316 Bronze G - Cu - Sn 10
2	Fan Impeller		
3	Çıkış Gövdesi Delivery Case		
4	Emiş Gövdesi Suction case		
5	Klape Valve	Delrin	
6	Yataklama Burcu Bearing Bush	Kauçuk + Bronz Nitrile Rubber + Bronze	-----
7	Mil Kaması Shaft Sleeve	Paslanmaz AISI 420 Cr Steel AISI 420	
8	Mil Shaft	Paslanmaz AISI 420 Cr Steel AISI 420	Paslanmaz AISI 304-316 Cr-Ni Steel AISI 304-316
9	Kaplin Couple	Paslanmaz AISI 420 Cr Steel AISI 420	
10	Filtre Strainer	Paslanmaz AISI 304 Cr-Ni Steel AISI 304	Paslanmaz AISI 316 Cr-Ni Steel AISI 316
11	Fan Koniği Bushing	Paslanmaz AISI 410 Cr. Steel AISI 410	
12	Civatalar Bolts	Din 933	

Fan Tipi <i>Impeller Type</i>	Karışık <i>Mixed</i>	Maks.Randimanda H (tek kd.) <i>Max.Flow Rate In H (single stage)</i>	15.58 m	Çalışma Ortamı <i>Operating Environment</i>	Temiz Su <i>Clear Water</i> ph 6,5-8,0
Maks.Randiman <i>Max.Efficiency</i>	71.0%	Maks.Randimanda Güç(P2)(tek kd.) <i>Max.Flow Rate In Power(P2)(single stage)</i>	10.76 kW	Maks. Çalışma Sıcaklığı <i>Max. Temperature</i>	30 °C
Maks.Randimanda Debi <i>Max.Flow Rate In Efficiency</i>	50 l/s	Maks. Güç(P2)(tek kd.) <i>Max. Power(P2)(single stage)</i>	11.33 kW	Maks. Katı Madde <i>Max. Solid Material</i>	50 gr/m ³



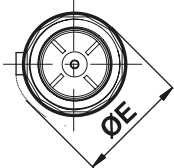
Performans Tablosu / Performance Chart

Pompa Tipi <i>Pump Type</i>	Motor Tipi <i>Motor Type</i>	HP	kW	Nominal Akım <i>Current</i> 380V	Q	n = 2900 d/d rpm							
						l/sec	0	35.0	40.0	50.0	55.0	60.0	65.0
						m ³ /h	0	126.0	144.0	180.0	198.0	216.0	234.0
					l/min	0	2100	2400	3000	3300	3600	3900	
USP 8 F/1	USM 6020	20.0	15.0	33.0	H m	29	19	18	16	13	11	8	
USP 8 F/2	USM 6040	40.0	30.0	63.0		59	38	35	30	25	22	17	
USP 8 F/2	USM 7040			62.4									
USP 8 F/3	USM 7060	60.0	45.0	92.6		88	57	54	47	41	35	27	
USP 8 F/3	USM 8060			90.0									
USP 8 F/4	USM 7070	70.0	52.0	108.2		117	76	73	63	55	47	36	
USP 8 F/4	USM 8070			103.0									
USP 8 F/5	USM 8090	90.0	66.0	134.0		147	95	91	79	69	59	45	
USP 8 F/5	USM 10100			148.0									
USP 8 F/6	USM 8100	100.0	75.0	150.4		176	114	109	94	83	71	54	
USP 8 F/6	USM 10100			150.4									
USP 8 F/7	USM 8125	125.0	92.0	183.0		205	133	127	110	96	82	63	
USP 8 F/7	USM 10125			180.7									
USP 8 F/8	USM 10150	150.0	110.0	216.1	235	152	145	125	110	94	72		
USP 8 F/9	USM 10150	150.0	110.0	216.1	264	171	164	141	124	106	81		
USP 8 F/10	USM 10175	175.0	129.0	250.6	293	190	182	156	138	118	90		
USP 8 F/11	USM 10175	175.0	129.0	250.6	323	209	200	172	151	129	99		
USP 8 F/12	USM 10200	200.0	147.0	285.6	352	228	218	187	165	141	108		

Ölçüler & Ağırlıklar

Dimensions & Weights

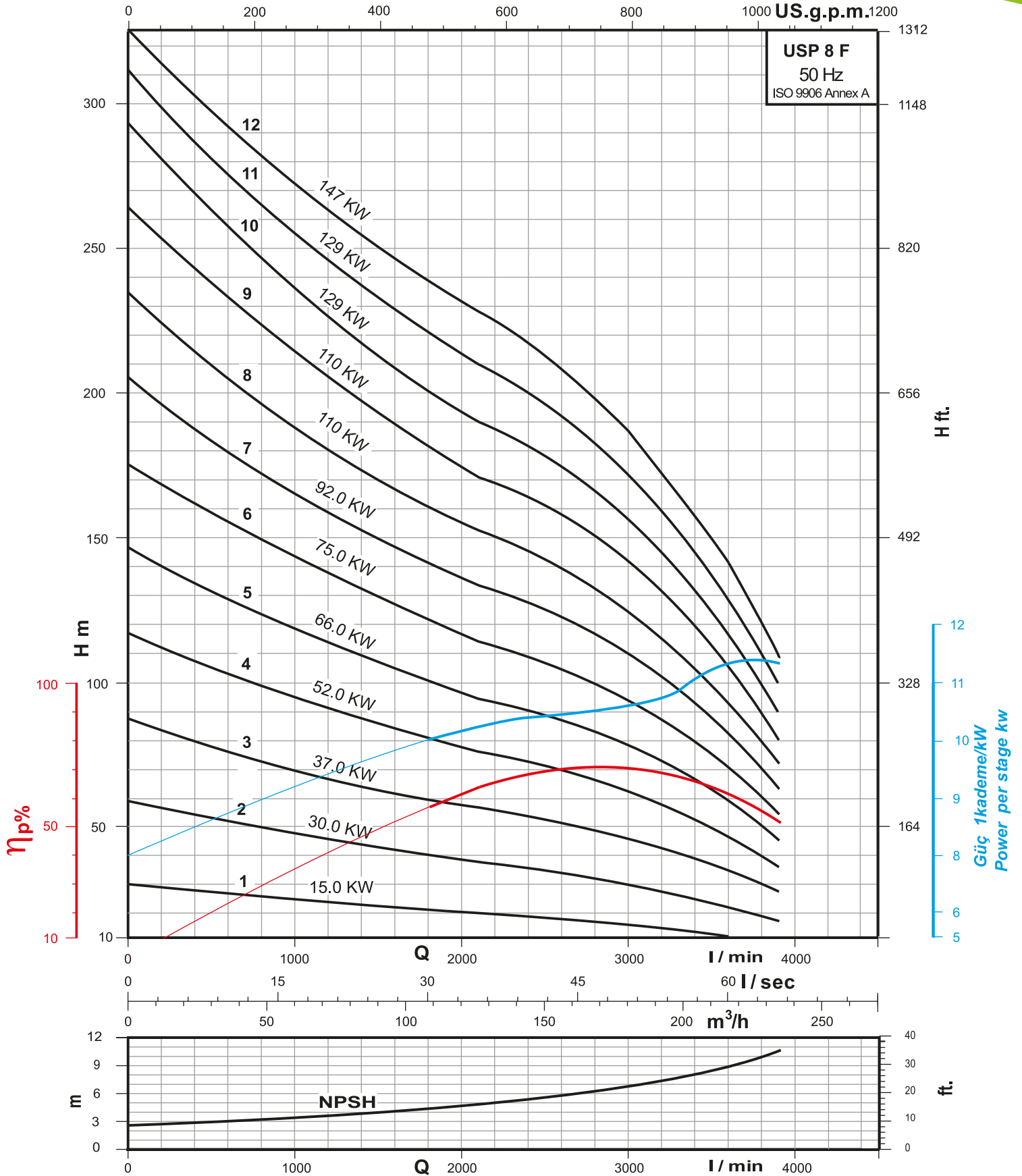
Pompa + Motor <i>Pump + Motor</i>	ØM (mm)	ØE (mm)	Boy <i>Length (mm)</i>		Ağırlık <i>Net Weight (kg)</i>	
			L1	L	Pump	Pump+ Motor
USP 8 F/1 + USM 6020	142	205	745	1665	47.5	123.5
USP 8 F/2 + USM 6040	142	205	935	2180	61.5	170.5
USP 8 F/2 + USM 7040	170	205	935	1870	61.5	165.5
USP 8 F/2 + USM 8040	190	205	935	1865	64.0	211.0
USP 8 F/3 + USM 7060	170	205	1125	2230	75.5	205.5
USP 8 F/3 + USM 8060	190	205	1125	2275	78.0	238.0
USP 8 F/4 + USM 7070	170	205	1315	2520	89.5	236.5
USP 8 F/4 + USM 8070	190	205	1315	2550	92.0	264.0
USP 8 F/5 + USM 8090	190	205	1505	2825	106.0	295.0
USP 8 F/6 + USM 8100	190	205	1695	3055	120.0	330.0
USP 8 F/6 + USM 10100	231	205	1695	2925	124.0	364.0
USP 8 F/7 + USM 8125	190	205	1885	3370	134.0	362.0
USP 8 F/7 + USM 10125	231	205	1885	3295	138.0	419.0
USP 8 F/8 + USM 10150	231	205	2075	3565	152.0	464.0
USP 8 F/9 + USM 10150	231	205	2265	3755	166.0	478.0
USP 8 F/10 + USM 10175	231	205	2455	4040	180.0	523.0
USP 8 F/11 + USM 10175	231	205	2645	4230	194.0	537.0
USP 8 F/12 + USM 10200	231	205	2835	4550	208.0	593.0



Performans Eğrisi / Performance Curves

Karışık Akışlı 8" Döküm Gövdeli Dalgıç Pompa

Mixed Flow 8" Cast Iron Submersible Pump



Performans eğrileri 15 °C sıcaklıkta, 1 atm. basınç altında, fiziksel değerleri kinematik viskozite $\nu = 1 \text{ mm}^2 / \text{s}$ ve yoğunluk $\rho = 1000 \text{ kg} / \text{m}^3$ olan temiz su baz alınarak hazırlanmıştır.
Performance curves are based on temp. 15 °C , with pressure 1 atm. , physical values kinematic viscosity $\nu = 1 \text{ mm}^2 / \text{sec}$ and density $\rho = 1000 \text{ kg} / \text{m}^3$.
Firmamız , ürünler üzerinde haber vermeksizin değişiklik yapma hakkına sahiptir. We reserve the right to make the changes on products without notice.