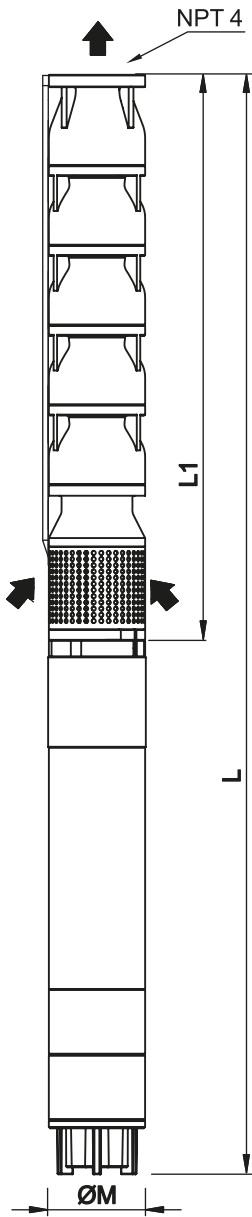


USP 5F, USP 6, USP 7, USP 8, USP 10 SERIES

No.	Pompa Parçası Pump Components	Standart Malzeme Standard Material	İsteğe Bağlı Malzeme Optional Material
1	Gövde/Difüzör Bowl / Diffuser	Kır Döküm - GG 25 Grey Iron - GG 25	Paslanmaz AISI 304-316 Bronz G - Cu - Sn 10 SS. Cast AISI 304-316 Bronze G - Cu - Sn 10
2	Fan Impeller		
3	Çıkış Gövdesi Delivery Case		
4	Emiş Gövdesi Suction case		
5	Klape Valve	Delrin	
6	Yataklama Burcu Bearing Bush	Kauçuk + Bronz Nitrile Rubber + Bronze	-----
7	Mil Kaması Shaft Sleeve	Paslanmaz AISI 420 Cr Steel AISI 420	
8	Mil Shaft	Paslanmaz AISI 420 Cr Steel AISI 420	Paslanmaz AISI 304-316 Cr-Ni Steel AISI 304-316
9	Kaplin Couple	Paslanmaz AISI 420 Cr Steel AISI 420	
10	Filtre Strainer	Paslanmaz AISI 304 Cr-Ni Steel AISI 304	Paslanmaz AISI 316 Cr-Ni Steel AISI 316
11	Fan Koniği Bushing	Paslanmaz AISI 410 Cr. Steel AISI 410	
12	Civatalar Bolts	Din 933	

Fan Tipi <i>Impeller Type</i>	Karışık <i>Mixed</i>	Maks.Randımında H (tek kd.) <i>Max.Flow Rate In H (single stage)</i>	8.69 m	Çalışma Ortamı <i>Operating Environment</i>	Temiz Su <i>Clear Water</i> ph 6.5-8.0
Maks.Randıman <i>Max.Efficiency</i>	64.0%	Maks.Randımında Güç(P2)(tek kd.) <i>Max.Flow Rate In Power(P2)(single stage)</i>	3.61 kW	Maks. Çalışma Sıcaklığı <i>Max. Temperature</i>	30 °C
Maks.Randımında Debi <i>Max.Flow Rate In Efficiency</i>	25.0 l/s	Maks. Güç(P2)(tek kd.) <i>Max. Power(P2)(single stage)</i>	3.7 kW	Maks. Katı Madde <i>Max. Solid Material</i>	50 gr/m ³

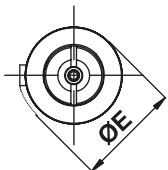


Performans Tablosu / Performance Chart

Pompa Tipi <i>Pump Type</i>	Motor Tipi <i>Motor Type</i>	HP	kW	Nominal Akım <i>Current</i> 380V	Q	n = 2900 d/d rpm							
						l/sec	0	20.0	22.5	25.0	27.5	30.0	35.0
						m ³ /h	0	72.0	81.0	90.0	99.0	108.0	126.0
USP 6 FX /2	USM 6010	10.0	7.50	17.3		32	20	19.5	18.8	17.8	15.8	10	
USP 6 FX /3	USM 6015	15.0	11.0	25.0		47	30	29	28	27	24	15	
USP 6 FX /4	USM 6020	20.0	15.0	33.0		63	40	39	38	36	32	20	
USP 6 FX /5	USM 6025	25.0	18.5	42.0		79	50	49	47	44	40	25	
USP 6 FX /6	USM 6030	30.0	22.0	49.8		95	60	59	57	53	48	30	
USP 6 FX /7	USM 6035	35.0	26.0	56.0	H	110	70	68	66	62	55	35	
USP 6 FX /8	USM 6040	40.0	30.0	63.0	m	126	80	78	75	71	63	40	
USP 6 FX/9	USM 6050	50.0	37.0	79.7		142	90	88	85	80	71	45	
USM 7050	76.1												
USP 6 FX /10	USM 6050	50.0	37.0	79.7		158	100	98	94	89	79	50	
USM 7050	76.1												
USP 6 FX /11	USM 7060	60.0	45.0	92.6		173	110	107	104	98	87	55	
USP 6 FX /12	USM 7060	60.0	45.0	92.6		189	120	117	113	107	95	60	

Ölçüler & Ağırlıklar
Dimensions & Weights

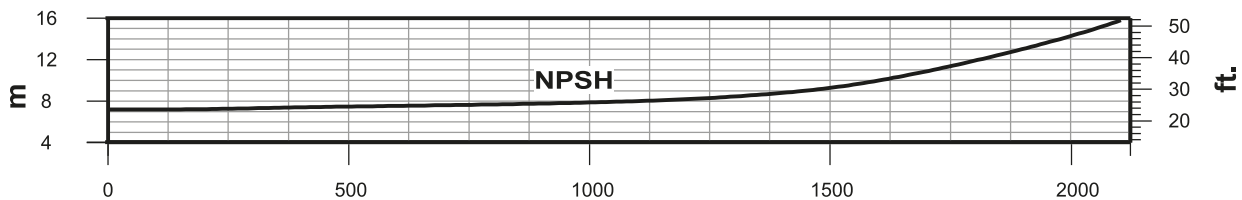
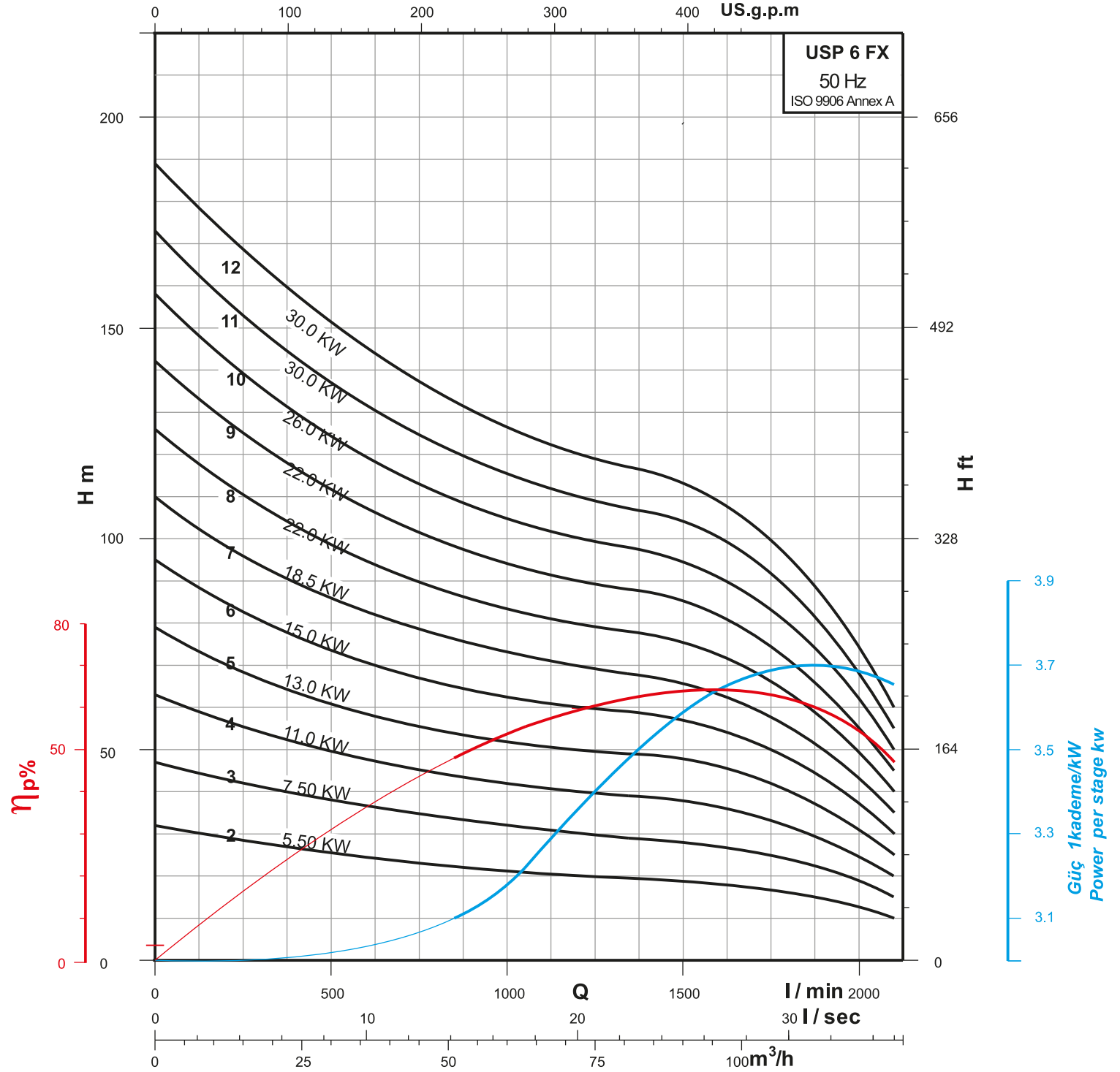
Pompa + Motor <i>Pump + Motor</i>	ØM (mm)	ØE (mm)	Boy <i>Length (mm)</i>		Ağırlık <i>Net Weight (kg)</i>	
			L1	L	Pump	Pump+ Motor
USP 6 FX/2 +USM 6010	145	153	635	1350	29.0	84.0
USP 6 FX/3 +USM 6015	145	153	775	1570	35.0	97.0
USP 6 FX/4 +USM 6020	145	153	915	1835	41.0	117.0
USP 6 FX/5 +USM 6025	145	153	1055	2070	47.0	133.0
USP 6 FX/6 +USM 6030	145	153	1195	2290	53.0	148.0
USP 6 FX/7 +USM 6035	145	153	1335	2480	59.0	159.0
USP 6 FX/8 +USM 6040	145	153	1475	2720	65.0	174.0
USP 6 FX/9 +USM 6050	145	153	1615	2960	71.0	186.0
USP 6 FX/9 +USM 7050	145	153	1615	2640	71.0	189.0
USP 6 FX/10 +USM 6050	145	153	1775	3120	77.0	192.0
USP 6 FX/10 +USM 7050	145	153	1775	2800	77.0	195.0
USP 6 FX/11 +USM 7060	145	153	1935	3040	83.0	213.0
USP 6 FX/12 +USM 7060	170	153	2095	3200	89.0	219.0



Performans Eğrisi / Performance Curves

Karışık Akışlı 6" Döküm Gövdeli Dalgıç Pompa

Mixed Flow 6" Cast Iron Submersible Pump



Performans eğrileri 15 °C sıcaklıkta, 1 atm. basınç altında, fiziksel değerleri kinematik viskozite $\nu = 1 \text{ mm}^2 / \text{s}$ ve yoğunluk $\rho = 1000 \text{ kg} / \text{m}^3$ olan temiz su baz alınarak hazırlanmıştır.
Performance curves are based on temp. 15 °C , with pressure 1 atm. , physical values kinematic viscosity $\nu = 1 \text{ mm}^2 / \text{sec}$ and density $\rho = 1000 \text{ kgs} / \text{m}^3$.
Firmamız , ürünler üzerinde haber vermeksizin değişiklik yapma hakkına sahiptir. We reserve the right to make the changes on products without notice.