

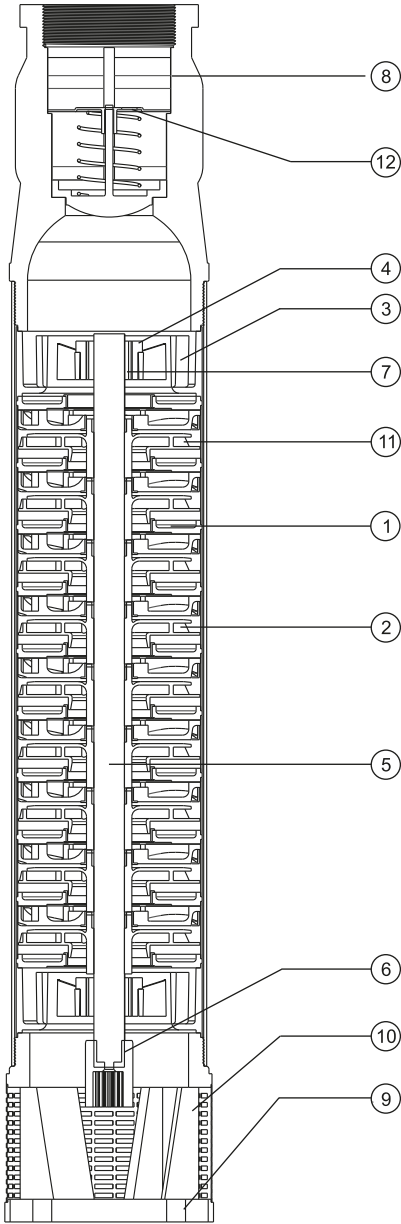
Teknik Bilgi / Technical Data

Radyal ve Karışık Akışlı 6" Polikarbon-Paslanmaz Çelik Dalgıç Pompa

Radial and Mixed Flow 6" Polycarbonate-Stainless Steel Submersible Pump

Parça Listesi / Part List

USP 6 NB, R150 BS, R150 DS, R150 ES



No	Parça Adı / Part Name	Standart Malzeme Standard Material
1	Difüzör / Diffuser	Polikarbon / Polycarbonate
2	Fan / Impeller	
3	Yataklama Gövdesi / Bearing Case	Noril / Norly
4	Yataklama Lastiği / Bearing Rubber	NBR
5	Mil / Shaft	AISI 420
6	Kaplin / Coupling	Sinterize Paslanmaz Çelik Sintered Stainless Steel
7	Yatak Burcu / Bearing Bush	
8	Çıkış / Delivery Casing	Paslanmaz Çelik Döküm Stainless Steel Cast
9	Emiş / Suction Case	
10	Filtre / Strainer	AISI 304 Sac / Sheet
11	Difüzör Sacı / Diffuser Sheet	
12	Klape / Valve	

Teknik Bilgi / Technical Data

Radial Akışlı 6" Polikarbon-Paslanmaz Çelik Dalgıç Pompa  
Radial Flow 6" Polycarbonate-Stainless Steel Submersible Pump

Fan Tipi Impeller Type	Radyal Radial	Maks.Randımında H (tek kd.) Max.Flow Rate In H (single stage)	9.9 m
Maks.Randıman Max.Efficiency	59.0%	Maks.Randımında Güç(P2)(tek kd.) Max.Flow Rate In Power(P2)(single stage)	0.79 kW
Maks.Randımında Debi Max.Flow Rate In Efficiency	4.8 l/s	Maks. Güç(P2)(tek kd.) Max. Power(P2)(single stage)	0.83 kW

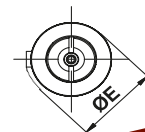
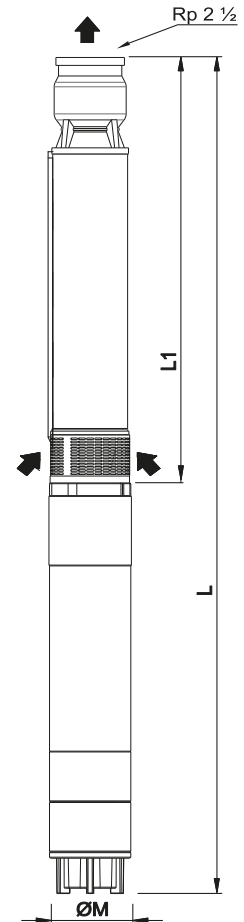
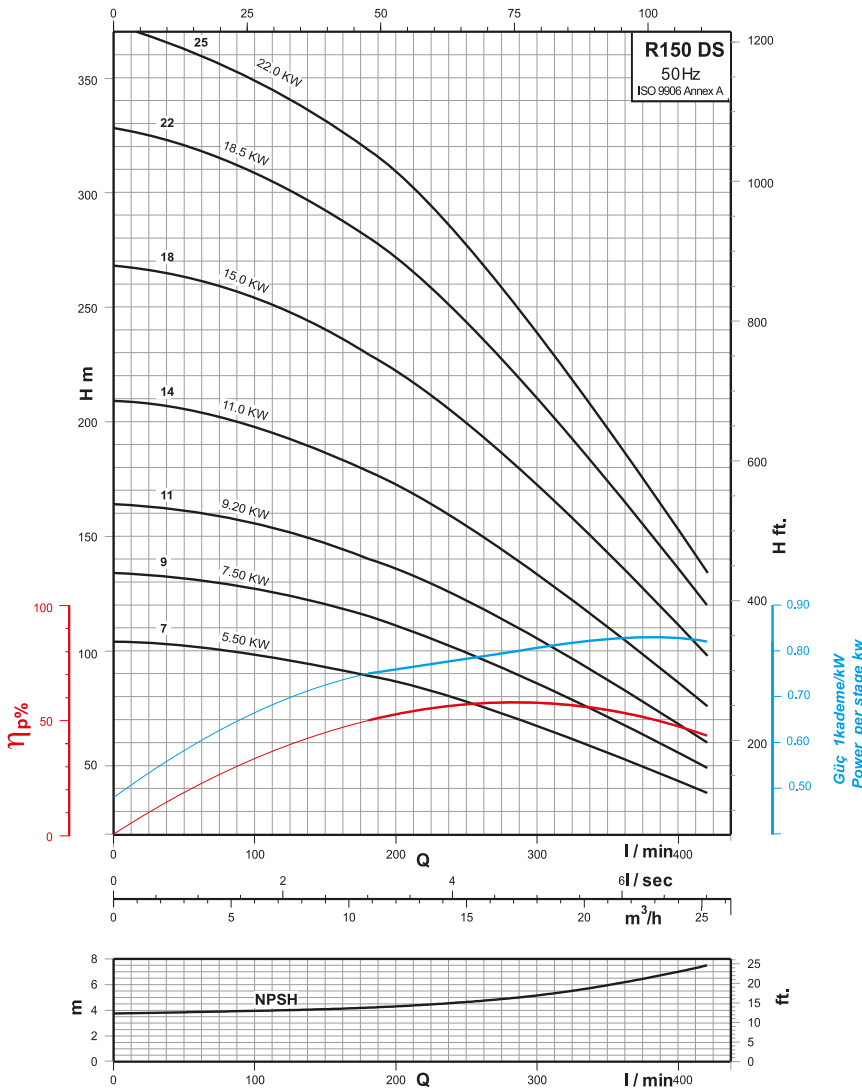
Çalışma Ortamı Operating Environment	Temiz Su Clear Water ph 6,5-8,0
Maks. Çalışma Sıcaklığı Max. Temperature	30 °C
Maks. Katı Madde Max. Solid Material	50 gr/m <sup>3</sup>

Performans Tablosu / Performance Chart

Ölçüler & Ağırlıklar  
Dimensions & Weights

Pompa Tipi Pump Type	Motor Tipi Type	HP	kW	Nominal Akım Current 380V	Q	n = 2900 $\frac{d}{rpm}$								ØM (mm)	ØE (mm)	Boy Length (mm)		Ağırlık Net Weight (kg)		
						l/sec	0	3.0	4.0	4.5	5.0	5.5	6.0			7.0	L1	L	Pump	Pump+ Motor
						m <sup>3</sup> /h	0	10.8	14.4	16.2	18.0	19.8	21.6			25.2				
R150 DS 7	USM 6007	7.50	5.50	13.6	H	104	89	80	73	67	60	53	38	145	144	715	1370	15.0	65.0	
R150 DS 9	USM 6010	10.0	7.50	17.3	m	134	115	102	94	86	77	68	49	145	152	805	1520	16.0	71.0	
R150 DS 11	USM 6012	12.5	9.20	21.0		164	140	125	115	105	94	83	60	145	152	895	1650	17.5	76.5	
R150 DS 14	USM 6015	15.0	11.0	25.0		209	178	159	146	134	120	105	76	145	152	1030	1825	19.0	81.0	
R150 DS 18	USM 6020	20.0	15.0	33.0		268	229	205	188	172	154	132	98	145	152	1235	2155	22.0	98.0	
R150 DS 22	USM 6025	25.0	18.5	42.0		328	280	250	230	210	188	166	120	145	152	1435	2450	25.0	111.0	
R150 DS 25	USM 6030	30.0	22.0	49.8		373	318	284	261	239	214	187	136	145	152	1570	2665	27.0	122.0	

Performans Eğrisi / Performance Curves



Performans eğrileri 15 °C sıcaklıkta, 1 atm. basınç altında fiziksel değerleri kinematik viskozite  $\nu = 1 \text{ mm}^2/\text{s}$  ve yoğunluk  $\rho = 1000 \text{ kg}/\text{m}^3$  olan temiz su baz alınarak hazırlanmıştır.  
Performance curves are based on temp. 15 °C, with pressure 1 atm., physical values kinematic viscosity  $\nu = 1 \text{ mm}^2/\text{s}$  and density  $\rho = 1000 \text{ kg}/\text{m}^3$ .  
Firmamız, ürünler üzerinde haber vermeksizin değişiklik yapma hakkına sahiptir. We reserve the right to make the changes on products without notice.