

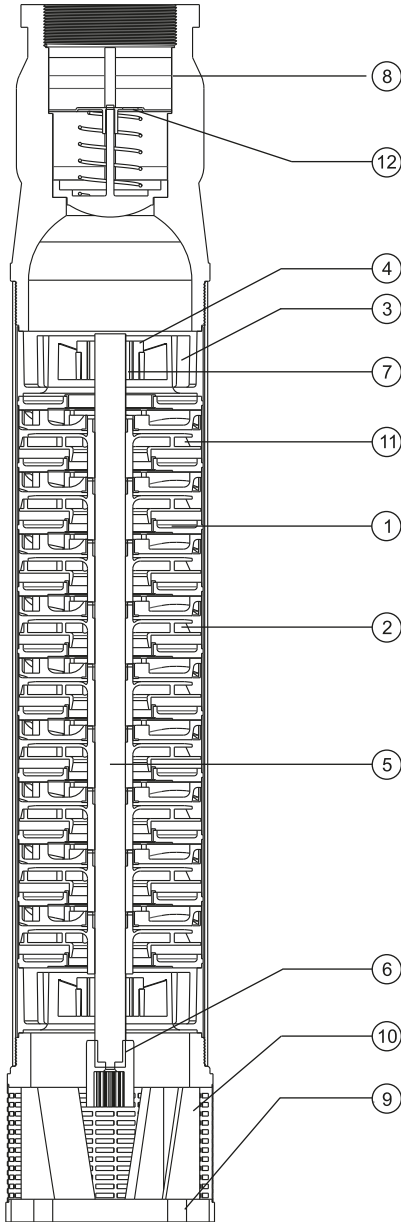
Teknik Bilgi / Technical Data

Radyal ve Karışık Akışlı 6" Polikarbon-Paslanmaz Çelik Dalgıç Pompa

Radial and Mixed Flow 6" Polycarbonate-Stainless Steel Submersible Pump

Parça Listesi / Part List

USP 6 NB, R150 BS, R150 DS, R150 ES



No	Parça Adı / Part Name	Standart Malzeme Standard Material
1	Difüzör / Diffuser	Polikarbon / Polycarbonate
2	Fan / Impeller	
3	Yataklama Gövdesi / Bearing Case	Noril / Norly
4	Yataklama Lastiği / Bearing Rubber	NBR
5	Mil / Shaft	AISI 420
6	Kaplin / Coupling	Sinterize Paslanmaz Çelik Sintered Stainless Steel
7	Yatak Burcu / Bearing Bush	
8	Çıkış / Delivery Casing	Paslanmaz Çelik Döküm Stainless Steel Cast
9	Emiş / Suction Case	
10	Filtre / Strainer	AISI 304 Sac / Sheet
11	Difüzör Sacı / Diffuser Sheet	
12	Klape / Valve	

Teknik Bilgi / Technical Data

Radyal Akışlı 4" Polikarbon-Paslanmaz Çelik Dalgıç Pompa
Radial Flow 4" Polycarbonate-Stainless Steel Submersible Pump

Fan Tipi <i>Impeller Type</i>	Radyal <i>Radial</i>	Maks.Randımanda H (tek kd.) <i>Max.Flow Rate In H (single stage)</i>	11.0 m
Maks.Randıman <i>Max.Efficiency</i>	55.0%	Maks.Randımanda Güç(P2)(tek kd.) <i>Max.Flow Rate In Power(P2)[single stage]</i>	0.549 kW
Maks.Randımanda Debi <i>Max.Flow Rate In Efficiency</i>	2.8 l/s	Maks. Güç(P2)(tek kd.) <i>Max. Power(P2)[single stage]</i>	0.575 kW

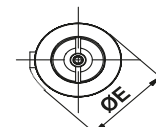
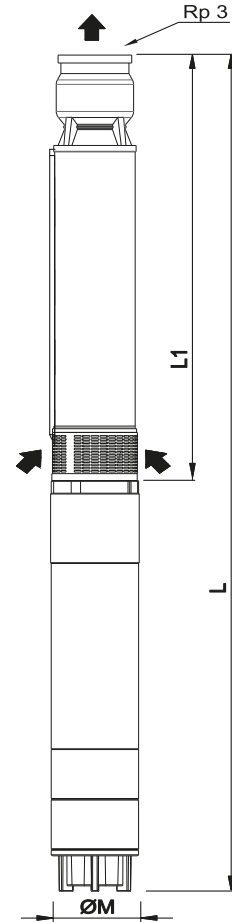
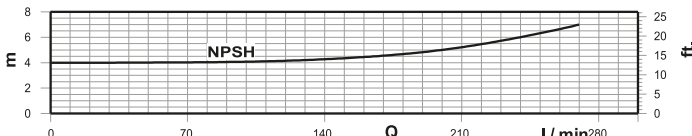
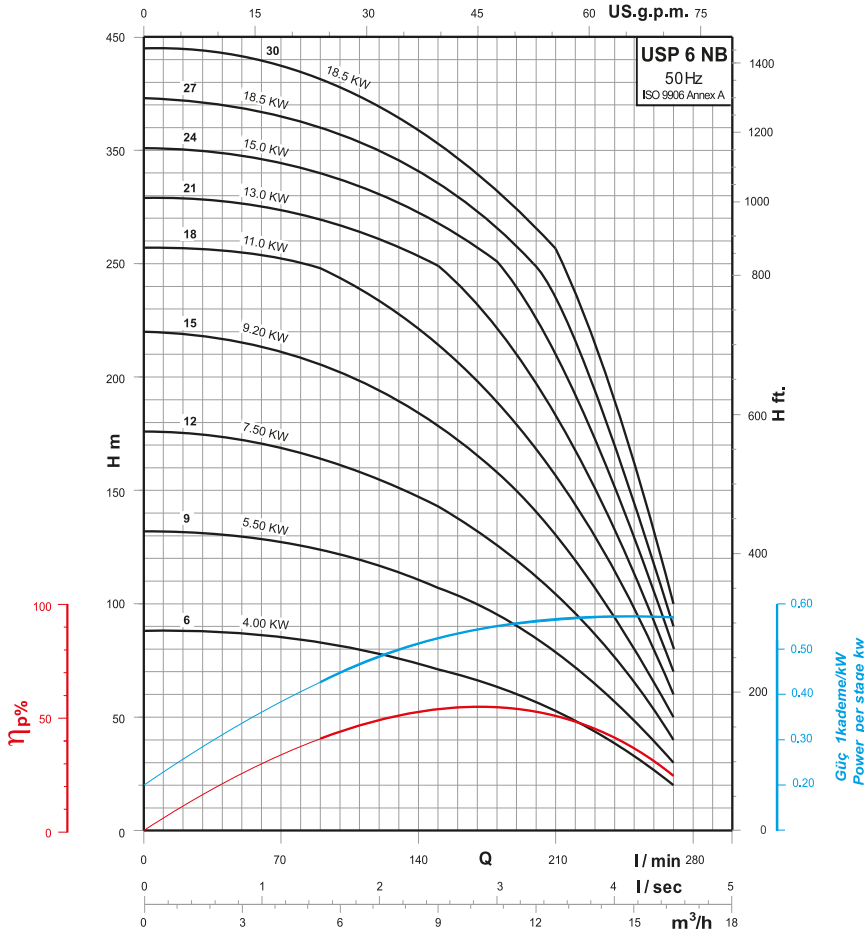
Çalışma Ortamı <i>Operating Environment</i>	Temiz Su <i>Clear Water</i> ph 6,5-8,0
Maks. Çalışma Sıcaklığı <i>Max. Temperature</i>	30 °C
Maks. Katı Madde <i>Max. Solid Material</i>	50 gr/m ³

Performans Tablosu / Performance Chart

Ölçüler & Ağırlıklar
Dimensions & Weights

Pompa Tipi <i>Pump Type</i>	Motor Tipi <i>Motor Type</i>	HP	kW	Nominal Akım <i>Current</i> 380V	Q	n = 2900 d/d								ØM (mm)	ØE (mm)	Boy Length (mm)		Ağırlık Net Weight (kg)		
						I/sec	0	1.5	2.0	2.5	3.0	3.5	4.0			4.5	L1	L	Pump	Pump+Motor
						m ³ /h	0	5.4	7.2	9.0	10.8	12.6	14.4			16.2				
USP 6 NB 6	USM 6005	5.50	4.00	10.3	H	88	83	78	71	63	53	38	20	145	141	570	1170	11.0	56.0	
USP 6 NB 9	USM 6007	7.50	5.50	13.6	m	132	124	117	107	95	79	56	30	145	141	610	1265	13.0	63.0	
USP 6 NB 12	USM 6010	10.0	7.50	17.3		176	165	156	143	126	105	75	40	145	141	790	1505	15.0	70.0	
USP 6 NB 15	USM 6012	12.5	9.20	21.0		220	206	194	178	158	131	94	50	145	141	970	1725	17.0	76.0	
USP 6 NB 18	USM 6015	15.0	11.0	25.0		264	248	233	214	189	158	113	60	145	141	1080	1875	19.0	81.0	
USP 6 NB 21	USM 6017	17.5	13.0	29.0		308	289	272	249	221	184	131	70	145	141	1240	2100	22.0	86.0	
USP 6 NB 24	USM 6020	20.0	15.0	33.0		352	330	311	285	252	210	150	80	145	141	1360	2280	24.0	100.0	
USP 6 NB 27	USM 6025	25.0	18.5	42.0		396	371	350	321	284	236	169	90	145	141	1475	2490	26.0	112.0	
USP 6 NB 30	USM 6025	25.0	18.5	42.0		440	413	389	356	315	263	188	100	145	141	1710	2725	30.0	116.0	

Performans Eğrisi / Performance Curves



Performans eğrileri 15 °C sıcaklıkta, 1 atm. basınç altında, fiziksel değerleri kinematik viskozite $\nu = 1 \text{ mm}^2/\text{s}$ ve yoğunluk $\rho = 1000 \text{ kg/m}^3$ olan temiz su baz alınarak hazırlanmıştır.
Performance curves are based on temp. 15 °C, with pressure 1 atm., physical values kinematic viscosity $\nu = 1 \text{ mm}^2/\text{s}$ and density $\rho = 1000 \text{ kg/m}^3$.
Firmamız, ürünler üzerinde haber vermeksizin değişiklik yapma hakkına sahiptir. We reserve the right to make the changes on products without notice.